

A PUBLICATION OF THE SOUTH WISCONSIN DISTRICT OF THE LUTHERAN CHURCH – MISSOURI SYNOD

IN THIS ISSUE

Wisemen found in Milwaukee page 3

How are your New Year's resolutions? page 5

Lutheran Deaf Mission partners in SWD page 6

Auroraville dedicates historical landmark Page 7

Around the District Page 8

Students keep in touch with the troops Page 8

School highlights in the Winnebago region Page 16

Visit swd.lcms.org

Teaching and reaching out among the Hmong in Thailand

Throughout the South Wisconsin District there is a Hmong population growing through birth and immigration. There are several Hmong congregations and pastors who reach out to Hmong families in their native languages and culture. But did you know that local Hmong congregations reach back to their homeland in Southeast Asia on a regular basis?

This past August, Rev. Yia Vang, member of the Hmong International Mission (HIM), invited fellow pastor Rev. Micah Wildauer (Bethlehem and Hope, Milwaukee) to join him in traveling to Chiang Mai, Thailand, to teach men aspiring to be pastors in their villages and missionaries among their people. Vang travels to Southeast Asia twice a year to train pastors or to reach out to villages not yet knowledgeable about the Gospel message of Jesus Christ. This trip was primarily designed to teach men from Thailand and Laos.

There is no formal Lutheran Synod in Thailand for the Hmong or the Thai people. Thai Lutheran churches are in the early formation of fellowship and national recognition, having drafted a constitution ac-

cepted by the government. They are led by Rev. Ted Nathalang. They have invited the handful of Hmong congregations to join them in their ongoing proclamation of the Gospel and general care for people. This early formation reflects the American Lutheran heritage by having multiple languages in one land and living together as one communion and confession (e.g., German, English, Slovak).

Vang and Wildauer focused their first week of study

on teaching the Catechism at home and in the church. Lutheran Heritage Foundation made Catechisms available in the Thai, Lao, and Hmong languages. The second week was spent studying the Gospel of Matthew in depth and learning how to read the text as a part of Scripture. Each night the group gathered for more teaching in



Students intensely look at a Greek New Testament

Bible study from the book of Ephesians. Approximately eight hours each day were spent in classroom work over the course of 10 days.

The instruction was a unique cross-cultural experience. Wildauer would speak a

(Continued on page 4)



Students from Thailand with Rev. Micah Wildauer



LCMS shifts to the right, ELCA shifts to the left Political attitudes revealed in two Lutheran denominations

By Sarah Holtan, Concordia University Wisconsin

A new survey identifying political attitudes in the LCMS and ELCA found that the LCMS church has become more right leaning, while the ELCA church has become more left leaning in the past 40 years.

Dr. Jim Burkee, associate professor of history and economics at Concordia University Wisconsin (CUW), and Dr. Jeff Walz, associate professor of political science at CUW, surveyed LCMS and ELCA clergy and laity in 2006 and 2009. They compared their findings to a similar study conducted in 1970.

According to Burkee, the results showed a remarkable shift in how clergy and laity

identify their political views from 1970 to 2006 and 2009. LCMS clergy identify more strongly with conservative ideology while ELCA clergy identify more strongly with liberal ideology since 2006 and 1970. Parishioners of both denominations tend to be more moderate than the clergy.

"Generally in the ELCA, you have a pretty big gap between the laity or the members and the pastors," said Walz. "The pastors tend to be pretty liberal on a number of different issues and the laity tend to be more moderate overall. In the LCMS, it's pretty similar, actually. Although the

pastors still tend to be more conservative."

Burkee said there is "a polarization of both churches and we're still trying to find why it's happening."

"Part of it does have to do with self-selection of the pastors and the membership, the people who tend to be more theologically conservative tend to gravitate to the LCMS and vice versa, though the ELCA does have a moderate to

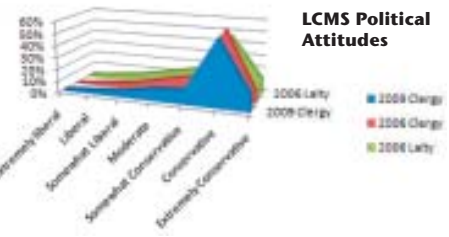
conservative vestige as well," Walz explained.

Generation gap

Interestingly, this survey found that the aging population in the LCMS is more likely to identify as politically moderate. The younger generation tends to identify as politically conservative.

"I think when you look at the pastors, I think it could ac-

(Continued on page 13)



South Wisconsin District—LCMS
8100 West Capitol Drive
Milwaukee, WI 53222-1920

ADDRESS SERVICE REQUESTED

THE PRESIDENT'S CORNER



Rev. John C. Wille

Thoughts on Isaiah 42:1-7

Life is full of choices. Some choices we make are very simple, while others affect our lives for years to come. It all begins on the playground when we are growing up. Children choose up sides for a game of kickball. High school students go on campus visits looking to choose the best college for themselves. Then, there is the question of what we will be when we grow up. There are so many choices. Some choices that we make affect the rest of our lives. One of those has to do with the husband or the wife that we marry. Employers hire applicants with the best qualifications; the ones with the best references are normally the ones chosen.

The choices that we make can affect our lives either in positive ways or in negative ways. Unfortunately all too often we make choices that affect our lives in very negative ways. King David is a good example. Like King David we make our choices without always thinking about the consequences. Like King David we often choose the path of self indulgence instead of that of purity. David committed adultery with Bathsheba. That led to murder, lies and a cover up. Like Peter in the courtyard of the high priest on Maundy Thursday, we often choose to follow the path of self preservation instead of faithfulness to our Lord. That leads to denying our Lord and ultimately disgrace. Like Lot we often choose the comfortable and the glamorous regardless of what that might mean to our spiritual well being. When Abraham gave Lot the choice of where he would settle in the Promised Land, Lot chose to live in Sodom and Gomorrah. City life is always more exciting.

We understand those choices because they are our choices as well. That's our natural default as sinners. We lean toward sin. We are sinners who sin. We are sinners who fall short of God's mark. We are sinners tormented by our guilt. We are sinners who don't measure up to God's demands. If God were to look at our references, he would not choose one of us to be his own. We just don't measure up.

The only one who deserved the love of God, the only one ever to earn God's love, is the one whom God himself holds up to us in these verses. God says, "Here is my servant, whom I uphold, my chosen one in whom I delight." At first it might be hard for us to understand just who God is talking about. But then when we hear what God the Father has to say in our Gospel lesson, the piece falls into place. As our Lord Jesus is baptized, God the Father speaks, saying, "This is my Son, whom I love, with him I am well-pleased." We hear the Father speaking those very same words once again on the Mount of Transfiguration.

God the Father has good reason to be well pleased with our Lord Jesus. Where we make bad choices, our Lord Jesus always made the right choices during his life. Tempted by the devil to choose comfort instead of God's way, Jesus remained hungry instead of turning those stones to bread. Tempted by the devil to choose comfort instead of faithfulness to his Father, Jesus chose faithfulness. Tempted by Peter to turn away from the agony of the cross, our Lord Jesus took up our cross willingly because he knew how badly we need forgiveness.

Where because of sin we deserved God's wrath, our Lord Jesus came to bring us "justice." That might be a bit of a strange word when we consider our relationship with God. After all, if God were to give us justice, he would have to sentence us to hell eternally. Yet justice is exactly what we find in our Lord Jesus. St. Peter talks about God's unique justice when he tells us that Jesus "himself bore our sins in his body on the tree." Justice involves making things right. That's what Jesus did. Jesus made things right between God and us by obeying everyone of God's commandments—and by offering his body up on the cross for our sins. That's why God the Father claims Jesus as his own on the day of his baptism. Through our Lord Jesus we are qualified. Through the merits of our Lord Jesus, God the Father chooses us to be his own.

It's something to consider the next time we struggle with a guilty conscience. It's something to consider the next time someone doesn't measure up to our expectations. Have any of us ever measured up to God's expectations? How has God reacted to that? It is something to consider as we live together, as the people of God in this sinful world. God's justice is defined at the cross.

Adopt-a-student program

The SWD's new adopt-a-student program gives you an opportunity to assist and encourage students to continue in their studies for the ministry. Your charitable gift will make a difference by providing immediate debt relief for students and their families. You may offer a onetime gift or provide support over a defined period of time. It is a meaningful and wonderful way to support spreading the Gospel. Your gift will benefit a student based on financial need, commitment to the ministry and academic eligibility. For more information, please contact Chuck Kiehl, mission advocate, at 8100 W. Capitol Dr., Milwaukee, WI 53222; phone: (414) 464-8100 or e-mail kiehl@swd.lcms.org.

'A taste of elegance' dinner supports Camp LuWiSoMo

What were you doing Nov. 14, 2009? The answer for 140 strong supporters of Camp LuWiSoMo in Wild Rose, were at a "Taste of Elegance" dinner. Thanks to the hospitality of Hales Corners Lutheran, the gathering enjoyed a festive evening of good conversation, good food, plus an opportunity to bid on a wide variety of items, as a way of saying, "We want to support the continued ministry of Camp LuWiSoMo."

Thanks to donations of auction items, food, cooks, table settings, and many other items, the proceeds from the event were 100 percent available for camp needs. At the top of the list is the promise of a number of scholarships for needy campers next summer.

In addition to the food, fellowship and auctioning, a moving testimonial was given by Ryan Jones. He shared how much LuWiSoMo has meant in his walk of faith, and how strongly he believes it must be there for his one-year-old daughter. LuWiSoMo is a place where "children of God," regardless of their age, may freely express their faith and receive nurture and support in a beautiful retreat setting.

CLASSIFIED

PART-TIME ORGANIST AND CHOIR DIRECTOR NEEDED: Faith, Germantown, is seeking someone who is skilled in both playing the organ as well as choral direction. This is a part-time position with the candidate working between 15-20 hours a week. To learn more about the position, please call Rev. Thomas Kaul at (262) 251-8250.

CALLS & VACANCIES

CONGREGATIONS CALLING PASTORS:

- Beloit — St. John
- Madison — Immanuel
- Neenah — Peace
- Racine — Primera Iglesia
- Racine — Holy Cross
- Sheboygan — Immanuel
- West Salem — Prince of Peace

PASTORS WHO ARE CONSIDERING CALLS:

- Leonard Payton — St. John, Horicon to St. John, Forest Park, IL

PASTORS WHO HAVE DECLINED CALLS:

- Benjamin Squires — Immanuel, Brookfield to St. Paul, Matteson, IL



Subscribe to "eConnect," the president's monthly e-mail newsletter and get the latest news delivered to your inbox.

swd.lcms.org/e-news
Sign up for our e-NEWSLETTER

South Wisconsin District financial snapshot

For the 10 months ending Nov. 30, 2009

	11/30/09	11/30/08
Revenue	\$2,164,188	\$2,321,602
Expenses	2,343,984	2,622,319
Loss	-179,796	
	11/30/09	11/30/08
Congregational support	\$1,797,313	\$1,874,057
Decrease in income	-76,744	

For detailed information, go to swd.lcms.org and click on Ministry areas > Business office

SOUTH WISCONSIN **News**
Published bimonthly by the South Wisconsin District
The Lutheran Church—Missouri Synod

Volume 34, Number 1
8100 West Capitol Drive, Milwaukee, WI 53222-1920
(414) 464-8100 • In Wisconsin, (800) 793-3678
Fax: (414) 464-0602 • E-mail: swd@swd.lcms.org
Visit our website at swd.lcms.org

Production Manager Barbara Balwinski

The South Wisconsin District of The Lutheran Church—Missouri Synod connects, resources and equips God's people for bold witness of the Gospel of Jesus Christ.

NEXT ISSUE: MARCH/APRIL 2010
SUBMISSION DEADLINE — FEBRUARY 1
Send your news to: editor@swd.lcms.org

Wisemen found in Milwaukee Preaching festival at Beautiful Savior

The Partnership in Seminary Education reached another milestone Dec. 5, 2009, with a preaching festival at Beautiful Savior, Milwaukee. Prospective candidates for the SMP (Specific Ministry Pastor) program and a few SMP vicars prepared sermons on Matthew 2:1-12. Coordinator Dr. Harald Tomesch said he "saw Satan falling as lightning" as eleven sermons came to life.

Many of the first-time preachers are African American students who will make a great impact on the city of Milwaukee. It was clear they had been exposed to classic forms of the Southern preach-

ing style. The sermons lasted from six to 20 minutes. The pulpit was filled from 2-6:30 p.m. Themes like: "Share Your Unwrapped Treasure," "God's Agenda vs. Man's Agenda," "I am here to Worship the King," "Christ the King of All God's People," "The King of Salvation," and "The Worship of a New Born King!" also taught the students that one cannot exhaust the text.

Area pastors and their wives assisted with the event. The wives spent the early part of the afternoon looking at life



in the parsonage and the role of the preacher's wife. Special attention was given to law and gospel throughout the day. Many of the sermons can be found online at swd.lcms.org should you desire to be edified by the gifts presented by these wise men of Milwaukee.



Family night Hispanic outreach at St. Martini, Milwaukee

Monthly family worship nights, conducted in Spanish, have become very popular at St. Martini Lutheran School in Milwaukee. At the November service, 180 people including children were in attendance. Typically the evening begins with fellowship and supper before the worship service. It has become a great outreach as they draw in more than just the school families from the largely Hispanic neighborhood. The services are held on the third Friday of every month, with the exception of December when the school holds its children's Christmas service.

The tables used for these events are old wearing out quickly. If there is a congregation or school with extra tables, or someone who would like to make a donation toward new, lighter weight tables, please contact St. Martini at (414) 383-7058. The events are getting very crowded with the available tables.

Baptisms at correctional facility make for a great Thanksgiving



In a worship service at the Milwaukee County Correctional Facility-South on Sunday, Nov. 22, 21 incarcerated men were baptized into God's family of believers. Those present were (left to right): Rev. Jeff Thormodson (assistant to director for vicarage and internship at Concordia Seminary, St. Louis), Rev. Roger Heintz who officiated the baptisms, Vicar Elijah Ndon, Chaplain Patrick Batom, Rev. Micah Wildauer and Chaplain Afam Ikanih.

Kasongo serves Milwaukee immigrants and plants church in Africa

Vicar Gui Kasongo, a French-speaking African immigrant from the Congo, has almost finished his studies in the SWD Ethnic Immigrant Institute of Theology (EIIT) program. He is currently serving his own French African International Lutheran Church of Zion congregation that meets at Benediction, Milwaukee. But his heart is also in the Congo with his people there. He wants them know the entire truth of the Gospel that he has come to know here.

Kasongo has been busy forming a mission start with the help of Rev. Dan Hougard and the internet. A slide show about this ministry is available online which demonstrates how the Lord is at work in a new, vital and thriving mission start via the SWD Partnership in Theological Education process and the EIIT program.

To download the slideshow, visit the "News & events" page at swd.lcms.org.

What's happening with Camp LuWiSoMo's ministry?

By Rev. Bryan O'Connor

The article "Camp LuWiSoMo to close for the winter" in November's South Wisconsin News may have caused many Camp LuWiSoMo supporters concern. How did this happen? Who is responsible? Who is working to change this situation? What is happening to the Feeding His Flock capital campaign? What can I do?

In brief, LuWiSoMo was hit by several years of declining attendance. In summer 2009 the camp experienced the smallest attendance in many years. Small debts grew into large ones, which resulted in increased borrowing. The South Wisconsin District supported camp with a line of credit which needed to be repaid. By August it became obvious that proceeds from the summer programs would not be sufficient to repay the debt. The only remaining avenue

was to close the camp and lay off all but one part-time caretaker.

Four volunteer groups are addressing the issues, the camp board of directors, elected in June 2009 at the District convention; a special task force; a development committee; and Feeding His Flock campaign committee.

The camp board is addressing the challenge of publishing the annual brochure, promoting future programs and in general doing whatever is necessary to enable Camp LuWiSoMo to reopen in spring.

The special task force is in charge of designing a business plan that will enable LuWiSoMo to run in the black next summer and beyond.

The development subcommittee, in place for a year, will seek to promote activities designed to assure the

long range goal of continued camp ministry. Included are events like the golf outing held last August and the "Taste of Elegance" dinner held in November (see page 2). Still in the planning stage is a sponsorship program designed to assure that every young person might have the opportunity to attend camp before turning 14. Watch for an opportunity to participate.

Lastly, the Feeding His Flock campaign committee continues to gather funds toward the goal of building a new cafeteria and retreat facility. Funds are in a designated account with the Lutheran Church Extension Fund. We have until July 1, 2011 to match a \$250,000 grant. Persons who have already pledged are asked to be faithful to their promise. Those who can be asked to prayerfully consider renewing their

pledge for another year. The plans are in place, but all monies necessary to build must be donated before the matching grant funds will be released.

The most exciting question of all is "How can I help?" Camp LuWiSoMo is at a crossroads. We need to find new and better ways of communicating. Camp can be a wonderful faith-lifting experience, but many are still unaware LuWiSoMo exists. Without staff, we need persons who have talents in communication to help implement new and better ways to communicate with our congregations. One way everyone can help is to send a gift for the ministry of Camp LuWiSoMo. You may have put off financially supporting LuWiSoMo because you were unsure of the camp's future. Now is the time to step forward in faith and say, "I want Camp LuWiSoMo to be

there for my grandchildren and their children, and here is my gift to help make that happen."

Volunteers should contact the South Wisconsin District office at (800) 793-3678 or swd@swd.lcms.org. Gifts may be sent to 8100 W. Capitol Dr. Milwaukee, WI 53222. They should be carefully labeled for the ministry of Camp LuWiSoMo.

Most of all, please pray! Our loving Savior knows how much the ministry of Camp LuWiSoMo has affected the lives of thousands of persons over its nearly 50 years of existence. If you have never been to camp, ask someone in your congregation who has been there to tell you what camp has meant to him or her. And then make it part of your plans to be at Camp LuWiSoMo in 2010.

Parish nurse 10th anniversary celebration is bittersweet

This fall marked ten years since South Wisconsin District parish nurse network group was formed. An anniversary celebration was held Oct. 20 at the District office with the theme of "A Decade of Bountiful Blessings." Parish Nurse Darlene Sorrell, one of the

founding members of the group, welcomed almost 40 people to the event and gave a brief history of the network.

President John Wille provided the opening devotion, offering words of comfort at the loss of Jim Farrelly only days earlier. Jim Farrelly was in-

strumental in the formation and ongoing support of the parish nurse network. Part of the program included a special presentation made in his memory in the form of a financial gift to the Metro Milwaukee Lutheran Mission Society. Recognition was also given to Carol Lueders-Bolwerk, director of parish nursing ministries at Concordia University Wisconsin and also a founding member of the SWD network.

Dr. Marcia Schnorr, LCMS parish nurse coordinator and guest speaker at the celebration, shared "A celebration of blessings and a vision for the future." The program ended with a rededication of the 20 parish nurses present. Rev. Randy Raasch, theological advisor to the parish nurse program at CUW, led the rededication as well as a clos-



Dr. Marcia Schnorr

ing devotion.

The next meeting of the SWD parish nurse network will be Feb. 16, 2010, at Good Shepherd in Watertown. Parish Nurse Dorothy Degnitz (ddegnitz@yahoo.com) will host. All current and prospective parish nurses are welcome to attend.



Darlene Sorrell (right) presents a gift in memory of Jim Farrelly to George Lessmann, executive director of the Metro Milwaukee Lutheran Mission Society.

Lutheran school accreditations

Congratulations to the following schools, which have been recognized by the National Lutheran School Accreditation commission.

Newly accredited schools in 2009

Concordia University School, Milwaukee; Divine Redeemer, Hartland; St. Peter-Immanuel, Milwaukee

Accreditation renewed in 2009

Immanuel, Brookfield; Our Redeemer, Wauwatosa; St. John, Glendale; Trinity, Mequon. Our Redeemer, Wauwatosa, was also nominated for the exemplary status recognition.

For additional information about the accreditation process, contact the SWD commissioner, Michael Oldenburg, at (262) 367-3664.

Lutheran Special School & Education Services

Tuition assistance changes students' lives

The cost of educating a special needs student at Lutheran Special School & Education Services (LSSES) for one year is \$11,661. However, the effect of a Christian education is priceless.

The LSSES resource room located in St. John, Glendale, has three sisters who have benefited tremendously from the "Create a Dream" tuition assistance program. Two of the students have been in the re-

source room for two years and another came this year. According to Michele Wagner, LSSES fund development director, "The three girls come from a family of eight kids and a single mom. Their mother wanted them to have a Christian education and realized they needed to be in our programs, but required some assistance to do so."

As an educational resource and a ministry, the policy at LSSES is to never turn away a student because they cannot pay. In order to make it easier on families, LSSES has set tuition at \$4,000, leaving \$7,661 per child that needs to be raised through donations and grants. Even with the reduced cost, many families struggle to pay. Seventy-seven percent of the students enrolled in an LSSES program need some type of tuition assistance. Of the over \$500,000 that needs to be raised this year, \$306,440 will go to tuition assistance.

As a result, LSSES teacher Jenny Clemens has stepped up to help out. "Jenny drives them to and from school as needed or makes sure they have a ride. She makes certain they get to bed on time to the point that she tells them that she will have their mom call if they aren't going to bed," Wagner said. "She is there for their mother when she needs to talk to someone, and personally sought out one of the sponsors we have assisting the family with tuition."

This is not the first time Clemens or other faculty members have taken a family under their wing. "Our teachers are very caring. Jenny is an awesome part of our ministry, going above and beyond," said Judy Schultz, LSSES principal and administrator. "Actions like these make us different from other special ed programs. Jenny is dedicated and caring. She really loves the kids—it's just who she is."

Since coming to the resource room, the girls' "behavior has gotten better because there have been higher expectations for them," said Clemens. "There are also a lot of loving, caring adults in the school... e use love and logic as our discipline program. Their reading, comprehension and word accuracy has improved dramatically. Their writing skills have improved, too. I've been working with them at their level and pace, and giving them more one-on-one time has helped."

Clemens has helped out in other ways. "We collected canned goods for them, clothes and money for gas," she said.

There are always opportunities for individuals to sponsor a child's tuition, either in full or partially. If you would like to help sponsor a child through our "Create a Dream" tuition assistance program, please contact Michelle Wagner at (414) 461-8500.

Think you need a miracle to plan your next retreat or gathering?

"They make meetings miracles happen every day."
Pastor Aaron Soto, Wisconsin Youth Ministries

The experienced staff of the Fox Cities Convention & Visitors Bureau is available to help make your planning easy.

Contact Tami Hoff for information on holding your next meeting or event in the Fox Cities: thoff@foxcities.org

Miracles really do come true!
Give us a call, today.

Fox Cities of Wisconsin
Wisconsin's Shopping Place
WISCONSIN Department of Tourism
www.visitwisconsin.com

800-236-MEET • foxcities.org

A Place of Refuge Ministries

Refuge House provides needed shelter

The newspaper headline last November said it all. "The Milwaukee area shelters are full." Quotes from shelters around the Milwaukee area said they were turning people away on a regular basis. Many of those shelters call A Place of Refuge (APOR) looking for a place for the most vulnerable of the homeless they have no room for—pregnant women and children.

That is why, with four mothers, one infant and three on the way, four toddlers living onsite and six other children living offsite, Refuge House was a

very exciting place to be at Christmas. APOR was blessed to be able to keep these families safe and warm, and the families in turn were blessed by the Christmas spirit of so individuals and churches throughout South Wisconsin. Several churches set up "Giving Trees" with requests for donations for the residents. Food for Thanksgiving and Christmas meals was donated. A decorated Christmas tree was supplied. These and many other little things made Christmas special for the moms and children.

But most important are the

things that go on at the shelter every day. Refuge House provides opportunities for continual physical, emotional and spiritual growth, creating a positive foundation for responsible living and decision making and the opportunity to introduce women and their children to Christ.

If you would like to have your congregation, group or organization hear more about A Place of Refuge Ministries and the volunteer opportunities available, please contact Trish Kagerbauer at (414) 438-2767 or visit aporonline.org.

Campus ministry at UW—Milwaukee

The 2009-10 academic year has reached its midpoint and campus activities are going strong at the University of Wisconsin—Milwaukee (UWM).

For the past seven years, Luther Memorial Chapel & University Student Center in Shorewood has partnered with the South Wisconsin District to provide campus outreach to the students of UWM and other Milwaukee area campuses.

Current efforts include weekly outreach booths in the UWM student union and a monthly “table talk” lunch and discussion group. This past fall, students enjoyed fellowship during a weekend camping trip, a cookout, an Oktoberfest part, and organized a UWM community food drive for Hope Lutheran Church, Milwaukee.

“The year so far has been

a busy one, but a productive one,” said Deferred Vicar Kyle Krueger, who devotes over half of his time to campus and student work. “We’ve got a good group of students involved with activities, and we’re building a reputation on campus.” The reputation is due in part to a series of well-received on-campus presentations sponsored by Luther Memorial.

Past presentations have included the topics of intelligent design, marriage and depression on the college campus. The most recent was held in October, as Rev. Todd Peperkorn spoke on the coexistence of evil in the world with a loving God. Students, members of the community and local congregations were treated to an engaging look at the topic in light of the Complaint Psalms and the cross and death of our Lord Jesus

Christ.

On Feb. 16, 2010, Adam Francisco of Concordia Theological Seminary in Fort Wayne will give a presentation on the topic of Islam, offering those in attendance an apology for Christianity compared to the historical and theological differences of Islam. It will take place at 6:30 p.m. in the UWM Student Union (2200 E Kenwood Blvd). The presentation is free and open to the public. (See announcement on page 8.)

“We are thankful for the members of The South Wisconsin District for their continued support of this vital



Vicar Kyle and Kimberly Krueger (left foreground) and university students collect food from the UWM community to benefit food pantry at Hope Lutheran Church, near downtown Milwaukee.

campus work,” said Krueger. “I would encourage college students to make sure they are plugged into a good campus ministry or local church where they can continue to receive Christ’s gifts in Word and Sac-

rament while they are away from home.”

Please direct questions or offers of assistance to Krueger or Student Coordinator Rachel Ploetz at (414) 332-5732 or Imc_vicar@yahoo.com.

How are your New Year’s resolutions?

New year’s resolutions! Just hearing people talk about theirs makes me think about all of the different things people resolve to change about their lives to make things better. With each New Year comes the desire to identify a part of our life that could use improving. Sometimes we achieve our goals, and other times we fall short. I decided it was time to think about my own resolution.



Chuck Kiehl

Since joining the South Wisconsin District as mission advocate about a year ago, I have had the opportunity to have a firsthand look at God’s work in action. Whether reaching the lost or helping those in need, God is truly at work and blessing our various District missions.

With the new year approaching, I am asking myself, “What can I do to help this work? How do I fit into it?” Our Lord’s Great Commission to reach all people with his

gospel message is for everyone, not just the missionaries or the staff at the District office. As one person I can only reach a few, yet as a District we have strength in numbers. And so I am compelled to help our District do its work! That is my new year’s resolution—to help the mission work of the District by continuing to support it with daily prayer, and by making a monthly donation to back up good intentions with financial support.

Perhaps you would like to make a similar new year’s resolution. I’m giving it a name—“Mission Encouragement Network.” A network is defined as “a system of interconnected roads, individuals, or terminals” that serves to work together for a cause. The Great Commission that God gave us is the greatest cause in the world! Let’s encourage each other to become interconnected in this network and make a bigger impact than one person alone can accomplish. A gift of \$10 a month be-

comes \$120 in a year; \$20 becomes \$240. Whatever you can do, by mail or online, you will make a big difference in the lives and the souls Jesus came to seek and to save.

Now that I have made my

New Year’s resolution, I’m looking forward to sharing it. How about you? Pray with me now that God’s will be done through us, and that he will give us a sense of our place in his plan. Together, let’s make an eternal

difference in 2010. Join the Mission Encouragement Network! I’ll send you a 31-day prayer calendar to give you encouragement. May God bless your new year!

Prayerfully consider helping

I want to support missions in the South Wisconsin District and tell the Good News and love of our Savior Jesus Christ to all the world. Please accept my gift of:
 \$50 \$100 \$300 \$500 Other _____
 (Make checks payable to South Wisconsin District.)

Name and title (Mr., Mrs., etc.): _____
 Preferred E-mail: _____
 Preferred Phone: _____ Home Work Cell
 Address: _____
 City, State, Zip: _____
 Is this a joint gift with your spouse? Yes No
 Name(s) to be cited in recognition lists: _____

- I want my gift to support the highest priorities of the South Wisconsin District missions and ministries. OR:
- I would like my gift to support one of the following:
 - Mission Outreach — Reach the Lost
 - Mission of Mercy — Help the Poor
 - Mission Leadership — Train Pastors/Missionaries/Teachers
 - Mission Cross-Cultural — International & Local

Mail to: South Wisconsin District, 8100 W. Capitol Dr., Milwaukee, WI 53222

- Did you know that you can make gifts online? Visit swd.lcms.org and click the “Give Now” button.
- Please send me information about making a monthly donation through my checking/savings account or credit card.
- Please send me information about including my church or missions in my estate plan.

Teaching in Thailand

(continued from front page)

sentence or concept in English, Vang translated it into one of the Hmong dialects, and the students would write notes in their Hmong dialect, Thai, or Lao (or a mix!). The students then repeated what they gained to show they understood correctly.

The HIM has set up 15 classes for these men to study. Each man must attend all classes and then go through a seminary level test before being ordained to serve in village congregations. Being such a

young church body, there are only two ordained pastors, with one established church and a few preaching stations. The men being trained will go back to their villages and work to build a Lutheran church among their own people. Many will be bivocational, both pastor and farmer. There are around 10 men currently going through studies to serve as pastors.

There is a great challenge ahead for this young Lutheran church body. The Hmong

people are very proud of their ancestry. They are not Buddhist or Hindu, but meditate on ancestor honor. They also have a common enemy—many Hmong fear the Devil and the powers he bears. There are many rituals and rites that have been handed down through the years to preserve their beliefs. However the Hmong are a peaceful people and are willing to consider the thoughts and beliefs of others. They are often interested in what Christians have to say about their faith. The men studying with the HIM like to carry “Lutheran teachings” to the villages. These

CDs in the Hmong language are left with the mayor or chief to listen to. After hearing about Jesus who conquered the Devil by his perfect sacrifice, they are generally interested in hearing more about the message of salvation.

So why send English-speaking pastors to train these men? Why not just Hmong pastors? The setting allows for the men in training to see that there is a diverse and supportive body of believers standing behind those that are coming to teach. It is a living, active, reaching church body many miles away that desires their salvation and well-being in

Christ Jesus.

If you are interested in learning more about the Hmong International Mission, please visit hmonglcm.org. If your church is interested in a presentation about the mission work being done in Thailand, contact Rev. Micah Wildauer or Rev. Yia Vang at Hope, Milwaukee, (414) 264-4050. If you are interested in contributing to the ongoing mission work, please send contributions to “Hmong Mission Society,” c/o Rev. Yia Vang, 7017 N. 58th St, Milwaukee, WI 53223. Most of all the HIM appreciates your prayers.

Fan into Flame resources launch new ministries, still others wait to begin

Through God's people and his blessings, Fan into Flame is providing support to new mission initiatives in local LCMS congregations, LCMS districts, throughout the United States and across the globe.

Gifts received are being distributed quarterly for ministry according to a net allocation process that reflects the progression of the Gospel message in Acts 1:8: to Jerusalem (local outreach), Judea (district outreach), Samaria (national cross-cultural outreach) and to the ends of the earth (global outreach). Funds received to date support 17 of the 25 Fan into Flame national and international projects, as well as scores of local mission outreach projects of LCMS congregations and districts.

Following is a brief summary of the national and international projects, many of which are still in need of full or partial funding. Your prayers are requested on behalf of projects already in progress that are enabling Gospel outreach and leadership development.

The ends of the earth

Allocation: \$27 million. People: Adding missionaries to the field, \$15.7 million. Each network supported missionary (NSM) receives \$50,000 as a start-up amount, enabling missionaries to be called, equipped, and deployed. Ongoing support outside of Fan into Flame from LCMS congregations, organizations, families and individuals enables the career missionaries to continue their service in the field. It is estimated that 15 missionary positions could be funded annually through startup funds from this \$15 million fund. To date, LCMS World Mission has been able to call 35 new career missionaries.

Supporting substantial projects—\$11.2 million. These projects include:

Africa

- Seminary construction, Accra, Ghana EH
- New church buildings across Africa H
- New mission stations in East Africa—mobile mission training centers GH
- Jonathan Ekong Memorial Lutheran Seminary dormitory, Nigeria H
- Africa theological education fund
- Matongo Lutheran College/Seminary expansion, Kenya H
- Mission health care centers across Africa H

Asia

- Concordia International School, Hanoi, Vietnam HH
- China Lutheran Seminary, Taiwan nH
- New mission starts, new church buildings, India EnH
- New mission starts on the tea plantation of Sri Lanka GH
- Concordia Seminary upgrade and expansion, Nagercoil, India GH

Eurasia

- Central Asia Lutheran Seminary/Lutheran Church Concordia, Bishkek, Kyrgyzstan nH
- Lutheran Ministry Center, Vilnius, Lithuania H
- Preventing HIV/AIDS in the former Soviet Union H
- Westfield House (Seminary) expansion, Cambridge, England H
- Wittenberg Center, Germany GH
- Restoration of St. Michael Lutheran Church, St. Petersburg, Russia 8
- Expanded facility, Omsk, Russia 8

Latin America

- School for missionaries, Argentina H

Samaria

Allocation: \$16 million.

Outreach faith sharing GH—The **Ablaze!** Bible listening project provides personal CDs and digital Bible Sticks® of God's Word recorded in a dramatized fashion for listening and sharing with others. Digital recordings of the Bible in up to 300 languages are available for groups around the world.

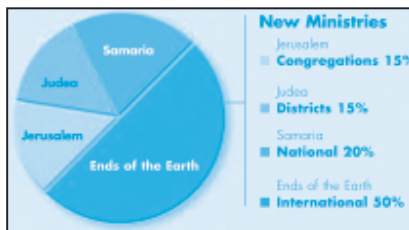
Revitalize existing congregations into "mission outposts" GH—Congregations in maintenance mode or declining in Gospel outreach express a desire to become a mission outpost. LCMS World Mission has developed a process to assist local congregations in revitalizing their sense of mission.

Assist districts and congregations to launch new

Fan into Flame

PROJECT STATUS KEY

G	Project begun
E	Building in progress
n	Construction completed
H	Partial funding still needed
h	Preparing for 2010 opening
8	Completed



ministries GH—Ablaze! congregations formally covenant with LCMS World Mission and their district to employ creative outreach activities of various kinds to plant up to four new congregations.

Samaria and the ends of the earth

Allocation: \$20 million.

Where needed most—general unrestricted funds.

Mission opportunity and emergency fund endowment—A permanent quasi-endowment will enable LCMS World Mission to respond to new mission opportunities and meet sudden urgent needs, such as emergency evacuation of missionaries during times of unrest.

Jerusalem/Judea

Allocation: \$27 million.

These funds support outreach activities to be conducted locally and regionally. Mission project plans are available online at fanintoflame.lcms.org, under "District Case Statements" and "Reports." The Fan into Flame project synopses document is available online under "Resources." For questions, call the Fan into Flame campaign office at (314) 996-1661.



Rev. William Palmer (left) witnesses President John Wille signing the memo of understanding between the South Wisconsin District and the Lutheran Deaf Mission Society.

Lutheran Deaf Mission Society partners in Southern Wisconsin

Nov. 8, 2009, was a historic day for Lutheran Deaf Mission Society and the South Wisconsin District. In a service held at Holy Cross Deaf, Delavan, a memorandum of understanding was signed that describes the relationship between the SWD, the Lutheran Deaf Mission Society, the Lutheran Deaf Mission Society—South Wisconsin Area Branch, Our Savior Deaf (Madison), Emmanuel Deaf (West Allis), and Holy Cross Deaf (Delavan). SWD President John Wille was unable to attend the service but signed the agreement Nov. 6, 2009.

Goals of this partnership include the desire to minister to deaf people within the South Wisconsin area in both Word and Sacrament; work together to bring more deaf people to the saving knowledge of their Lord and Savior; and partner in both mission and resource development. The Lutheran Deaf Mission Society—South Wisconsin Area Branch will work together with deaf congregations in southern Wisconsin to help deaf people know Jesus and serve Jesus.

District honored at LCEF annual conference

South Wisconsin receives performance award

The Lutheran Church Extension Fund (LCEF) honored the South Wisconsin District with an outstanding performance award Nov. 22, 2009, in Tampa, Fla., during LCEF's annual leadership conference.

"We recognize the outstanding efforts the South Wisconsin District has shown in looking ahead and helping ensure that congregations and schools have the resources needed to continue our collective work in support of the Great Commission," said LCEF

President Merle Freitag. "It is inspiring to see members of this district to paying special attention to fiscal and spiritual stewardship."

Congregations in the South Wisconsin District participated in numerous programs in LCEF's ministry services area, most notably conducting 19 Consecrated Stewards programs and six capital stewardship campaigns. In addition, members of the District remained faithful to the mission of investing in the future of the church and increased the number of assets invested

with LCEF. The District is served by LCEF Vice President Tim Dittloff.

Lutheran Church Extension Fund is a preferred partner to the LCMS in making funds and services available. A not-for-profit organization, LCEF provides low-cost loans and facility-planning services to churches and schools of the LCMS through the investment support of church members. For more information, call (800) 843-5233 or visit lcef.org.



The South Wisconsin District was honored for its support of the Church Extension Fund through investment, loan, and services with the Lutheran Church Extension Fund (LCEF). The award was presented to Tim Dittloff, District vice president (center) during LCEF's annual conference in November. He is pictured with Barb Slak, SWD administrative assistant, and (far left) LCEF Board Chairman Rev. David Belasic, District President Rev. John Wille, and (far right) LCEF President Merle Freitag.

Disaster relief training for congregations

Is your congregation ready if a disaster occurs? What would you do first? Are you able to help others in the event of a disaster?

LCMS Human Care and World Relief have put together the training tools needed for congregations to develop a plan for being prepared when a disaster strikes. The South Wisconsin District disaster response team is trained and willing to take your congregation through the plan. It takes about three hours with key leaders of your church. Workshop participants address such questions as, "Do we have a contingency plan in the event that the pastor becomes a victim of a disaster?" and "In the event that a tornado is bear-

ing down on our church during worship service, who should be the person to say we need to evacuate, and where is the safest place for the people to go?"

In disasters God often opens doors for his church to do ministry. Participants also address questions like, "What are some ways that our congregation can offer Christ's comfort to the community after a disaster?" and "What happens to the church budget; can designated funds be used in times of crisis?"

Several District congregations have already participated in this free training. Your congregation is invited to participate as well. The next training will be offered Saturday,

March 20, 2010 at Elm Grove Lutheran, 945 N. Terrace Dr., Elm Grove, from 9 a.m. to noon. If you have a group of congregational leaders who would be interested in this training, please fill out the form below, checking the "Congregational Disaster Relief Training" box, and send it to the District office. Registration is also available online at swd.lcms.org/registration.

If you would prefer to schedule a training session for your area's congregations, you are encouraged to do so. Please contact Rev. Bill Wagner, SWD disaster team coordinator, at (608) 751-5918, or Peg Raabe at the District office, (414) 464-8100 for more information.



Rev. Jack Fish and Gary Wilson, a member of Hope, Twin Lakes, attend a congregational disaster training workshop.

Becoming a "LERT"

Training for Lutheran early response teams

If you are interested in more in-depth training to become a certified disaster team member, you may be interested in "Lutheran Early Response Training" (LERT) that will be offered this spring at Good Shepherd, 4311 104th St., Pleasant Prairie, on April 17 from 9 a.m. to 4 p.m.

By federal mandate, any volunteers responding to a disaster must be trained and certified or they will be turned away. The Synod's LERT program complies with all of the federal government's criteria for this certification. Should a disaster happen, trained teams would be put on call and may be asked to deploy in 72 hours or less to respond to the disaster.

The training covers the following core areas:

- Ministry of opportunities
- Chain saw safety (all LERT members will receive chain saw training. If you want to be on a chain saw team as an operator you must be chain saw certified. Only certified trained volunteers may operate chain saws or be within 6 feet of a running saw.)
- Clean up and debris training
- Tarp and patch safety
- Muck out training
- Flood and storm surge training
- Three phases of disaster work
- Four phases of emotions
- National credentialing

There is no cost for the training. If you would like to take part, please fill out the form at left and send it to the District office, checking the "LERT Program Training" box and noting any certifications you already have. You may also register online at swd.lcms.org/registration. Contact Rev. Bill Wagner, SWD disaster team coordinator, at (608) 751-5918, or Peg Raabe at the District office, (414) 464-8100 for more information about LERT.

Registration for Disaster Response Training

I would like to register for (please check one):

- Congregational disaster response training
March 20 • Elm Grove, Elm Grove
- LERT program training
April 17 • Good Shepherd, Pleasant Prairie

Name(s) _____

Congregation, City _____

Daytime contact number _____

Contact e-mail address _____

Mail this registration form to: Disaster Response Training, South Wisconsin District, 8100 W. Capitol Drive, Milwaukee, WI 53222-1920. Or sign up online at swd.lcms.org/registration.

Auroraville dedicates historical landmark

Oct. 4, 2009 was a happy day at Immanuel, Auroraville. On that date the Walter A Beltz historical landmark was dedicated with a special service and open house.

The single room structure housing the landmark was the original church building constructed in 1887 by the seven founding families of the congregation. When a new and larger church was needed, the original building served as a one room school. In recent years it had fallen into disrepair and an ad hoc committee from the church and the Auroraville community was formed to raise funds for repair and renovation. It was decided

to use the building for a church and community museum to reach out into the larger area served by the congregation.

The structure is now called the Walter A. Beltz Historical Landmark, named for Immanuel's longest serving pastor (1919-39). Beltz also served as the full time teacher of the parochial school housed in the building. All too soon Beltz was called home at the age of 44. He was beloved by the congregation, the community and the LCMS at large. Nearly 900 people attended his funeral service. (Auroraville has a population of about 90 and the church membership

hovers around 100).

Several members of the Beltz family attended the dedication service, the highlight of which was the preaching of one of Walter Beltz's celebratory sermons from 1930 by the current pastor, Rev. Brian Beardsley. A potluck meal and open house followed the special service. The Beltz family, several people who had attended school in the one room building, and people from the congregation and community enjoyed renewing acquaintances and reminiscing over the old photographs and books, many of which were donated to the museum by the Beltz family.



Pictured at the ribbon cutting ceremony are (left to right): Kristy and Steven Beltz, Aline Brey, Chris Maas, Lee Beltz, Bernice Beltz, LuElla Huebner, Pearl Wilson, Silas Beltz, Harley Rodencal, Arnold E. Rodencal, Lucinda Niemuth.

La Valle congregations celebrate 25 years 'Together in Mission'

LCMS World Mission reported that 15 LCMS congregations will be celebrating 25 years of partnership with LCMS missionaries through the Together in Mission program. Two of the congregations are located in the South Wisconsin District: St. Paul and Zion in La Valle.

"Without our Together in Mission partnerships, we could not be on the field," said J.P. and Aimee Cima, human care workers in Southeast Asia. "We do not go to Vietnam in isolation or for our own purposes, but on behalf of the church, representing those who have sent us. Financial donations help us physically get there, but it is on the wings of thousands of prayers, offered by our Together in Mission partners, that we are truly able to fly in the confidence of God's endless provision. Moreover, it is the personal

relationships with our Together in Mission partners that provide the most support. E-mails, letters, packages, visits—our Together in Mission congregations aren't some name on a report, but rather they are our partners, our friends, our global extended family, united in Christ."

Together in Mission congregations pledge ongoing financial support, prayer and encouragement.

Individuals and families can also support LCMS missionaries by becoming mission senders. A mission sender pledges annual support for any amount. Senders also enjoy direct contact with the missionaries they support.

To learn more about becoming a Together in Mission congregation or a mission sender, contact LCMS World Mission at (800) 433-3954 or mission.giving@lcms.org.

See comedy preview with MLHS guild

MLHS students will be giving a preview of their next dinner play at the ladies guild meeting **Jan. 19, 2010**, at 12:15 in the school library. This year's play is entitled "Captain Fantastic," a comedy about a young man obsessed with comic book superheroes. The preview demonstrates the students' talent "up close and personal." Guests are welcome to attend.

MLHS principal, Paul Bahr, has expressed his appreciation of the support of the guild on many occasions. At the **Feb. 16** meeting, Bahr will update the members on the programs and goals of the school.

The annual shrimp dinner buffet, sponsored by the guild, will take place on **March 26**.

A crux for Muslims and Christians

On **Feb. 16, 2010**, Dr. Adam Francisco will present "Christ and the Cross: A Crux for Muslims and Christians." He will examine the fundamental differences between Islam and Christianity in light of the both religions' views and concepts of Jesus.



Dr. Adam Francisco

Please join Lutheran Student Fellowship of Luther Memorial Chapel and University Student Center in the Wisconsin room on the UW-Milwaukee campus from 6:30-8:30 p.m. Questions can be directed to Vicar Kyle Krueger at lmc_vicar@yahoo.com or (414) 332-5732.

Francisco is assistant professor of historical theology at Concordia Theological Seminary. He is a member of the Association for the Study of the Middle East and Africa, the Sixteenth Century Society, the International Society for Christian Apologetics. He is the author of "Martin Luther and Islam: A Study in Sixteenth-Century Polemics and Apologetics," coeditor of "Theologia et Apologia: Essays in Reformation Theology and Its Defense" and a contributing scholar for "Modern Reformation" magazine.

Women's night out March 12

Ruth Koch presents "Take the Risk," in which she will encourage us to 1) get out of our ruts, 2) examine the risks possible and 3) take them. Koch has been an effective counselor, teacher and speaker for over 30 years through the Midwest. She is connected with the Women's Leadership Institute at Concordia University Wisconsin. Participants are guaranteed a few "aha" moments as well as a chuckle or two.

The event begins at 6:30 p.m. (cash bar at 6 p.m.) on Friday, **March 12, 2010** at Davian's, 16300 W. Silver Spring Drive in Menomonee Falls. Registration cost is \$25 per person and is due before March 9. Send to Mt. Olive Lutheran School, 5301 W. Washington Blvd., Milwaukee WI 53208.

Clauson Family concert March 14 benefits Sheboygan chaplaincy ministry



Two hours of Branson-style entertainment will be presented at 1:30 p.m. on Sunday, **March 14, 2010**, by the Clauson Family Music Show at Sheboygan's Weill Center. The concert includes country western music, rock n' roll, ragtime, popular standards, gospel and comedy.

General admission is \$20; \$10 for children ages 6-12. Doors open at 12:30 p.m. The theater is located at 826 N. 8th St., Sheboygan. Call (920) 892-2211 for more information or visit clausonfamilymusicshows.com.

For advance tickets, send your check for the total number of adult and child tickets along with your name, address and phone number (e-mail address optional) to: Clauson Family Chaplaincy Concert, P.O. Box 351, Plymouth, WI 53073. Tickets will be mailed. A limited number of tickets will be available at the Weill Center box office on the day of the performance.

Schools keep in touch with the troops

Bethlehem, Sheboygan

Bethlehem Lutheran School recently collected food, toiletries, reading materials and games for the 440th Air-lift Wing which is a member of the 506 Expeditionary Group in Kirkuk, Iraq.

The students collected over twenty boxes full of items that were shipped to Iraq in time for Christmas. Each student in grades two through eight wrote a personal letter to soldiers serving at this time. The contact person for this project was MSGT Matt Wallner (a member of Immanuel, Sheboygan) who is finishing his tour in Iraq in January.

St. Paul, Oconomowoc

Each Monday last fall, students in the first grade class at St. Paul's Lutheran School in Oconomowoc brought homemade muffins to school to sell for their "Muffins for the Military" service project. Proceeds paid for the postage to send care packages to Wisconsin soldiers in Iraq.

Over Veterans Day, first grade students and their families filled care boxes. Other classes in the school wrote letters and drew pictures to include in the boxes. The children delivered the boxes to the post office, where they were sent to St. Paul's pastor, Doug Fleischfresser, to distribute.

Fleischfresser is deployed in Iraq with the 32nd Brigade, Red Arrow Division of the Wisconsin National Guard. His wife Sheri Fleischfresser is the second grade teacher at the



Students at Bethlehem, Sheboygan, representing each grade at the school from left to right are: Andrew Verhelst, Madelyn Pfannkuck, Noah Barthels, David Vanic, Melanie Anderson, Emily Glewen, Jacob Bartz, Aaron TenPas, Christian Stienert and Natalie Mullens.



The first grade class from St. Paul, Oconomowoc, with their teacher Stephanie Kelling.

school. Stephanie Kelling, the first grade teacher, and her husband, Rev. John Kelling, have a son, SPC Chris Kelling, who is also deployed with the 32nd Brigade in Iraq.

Soldiers from the 32nd Brigade (approximately 3500 Wisconsin National Guard sol-

diers) will complete their mission and are scheduled to return home in January 2010, after a year's deployment. Rev. Gene Henke, Our Redeemer, Wauwatosa, is also serving in Iraq as a chaplain to the Wisconsin soldiers. He will be returning in the spring.

Janesville women's ministry group hosts chocolate-themed retreat

A record of more than 210 participants attended the latest women's retreat hosted by St. Paul, Janesville, on Nov. 14, 2009. The theme, "Living the Chocolate Life: Savoring the Rich Indulgence of God's Grace," featured keynote speaker Deb Burma. The theme was taken from Ephesians 1:7-8, "In [Christ] we have... the forgiveness of sins, in accordance with the riches of God's grace that he lavished on us..."

"Living 'The Chocolate Life,' we sample everything from bitter nuggets of pain to sweet morsels of joy," said Burma. "Whatever the shape, flavor and texture of our days, and however our lives are packaged, we can savor the rich indulgence of God's endless supply of grace in Christ! He wraps us in his love and fills us with the sweet filling of faith in our Savior."

The keynote address was followed by breakout sessions. Topics ranged from time and family financial management to a brief synopsis of world religions; and from a collection of Christ-centered homemade

gifts to a look at personality strengths and differences. Another session featured St. Paul's teen missionaries who shared their adventures to Slovakia this past summer on a VBS youth ministry team.

The birth of the "Women Walking in the Word" (WWW) women's ministry at St. Paul's began in the spring of 2003 with the first retreat entitled, "Joy in the Journey." Since then, eight more retreats have been held. The format, which includes breakfast, praise music and a book sale, has been tweaked each time, but the focus has remained the same: providing special women's ministry events twice a year for spiritual refreshment and growth, outreach, fellowship and fun for the women of St. Paul's the surrounding community.

Each year the event also supports a mission. This year they chose to support Lutheran Deaf Missions led by Rev. John Reinke. Thirteen deaf women and two interpreters attended the retreat. As an added sweet treat, a daily de-



Deb Burma

otional book was gifted to each participant. The devotional was compiled and edited by Deb Burma and featured over sixty encouraging devotions from 30 different authors—all past WWW leadership team members.

The leadership team extends an invitation to other churches to meet with them and to help plan similar events around the District as an effort to further the kingdom through women's ministries. For more information visit stpaulsjanesville.com. St. Paul's next event entitled "Becoming" will be Saturday, March 20, 2010.

Mark Jeske will be main speaker at May 19 Cedar Valley gathering

It's not too early to mark your brand new 2010 calendars for Wednesday, May 19 (you may want to include the evening of May 18 also). If you are a modern-day "senior," you won't want to miss this year's Gathering at Cedar Valley! The theme is "God's Gifted Seniors—Yesterday and Today."

Back again by popular demand will be Rev. Jeffrey Dorth of St. John, West Bend, who will begin the day with a devotional Bible study. Then Rev. Mark Jeske of Time of Grace Ministry will share his insights about what's happening with "Lutherans Today" and help you to sort out how we're do-

ing. After lunch, Dr. Lois Mueller of Concordia University Wisconsin will get minds and bodies moving, sharing her helpful information on "Body Recall." That will be motivation for Jeske's "God's Gift of Seniors" presentation. He will help you rediscover what extraordinary things God led his older people in the Old and New Testaments to accomplish, and explore what a huge array of gifts today's seniors can offer today's church.

Cedar Valley Retreat and Conference Center is located about 10 miles west of West Bend. There will be a \$65 registration fee, with the option



Rev. Mark Jeske

of coming the evening of May 18 for a dinner and fireside chat with Mark Jeske. Brochures with registration materials will be available early in March at your church, by mail and on the District website, swd.lcms.org.



Directory

Lutheran Radio Church Service, **WJYI 1340 AM Sundays at 7 a.m.** and online at lutheranrncs.com. The program alternates weekly between WELS and LCMS services.

Pella, Waupun, **WFDL 1170 AM Sundays at 8 a.m.** with a taped replay at **11 a.m.**

St. Paul, West Allis, **WJYI 1340 AM Sundays at 8 a.m.** Services are live at splcwa.org. Call (414) 541-6250 for audiotape or CD.

Trinity-Freistadt, Mequon, services **Sundays at 8:45 a.m.** are streamed live at worship.trinityfreistadt.com.

Messiah, Ripon, **WRPN 1600 AM Sundays at 9 a.m.**

Mt. Olive, Milwaukee, **WJYI 1340 AM Sundays at 9 a.m.**, archived services at mtolivemke.org.

German radio program, **WJYI 1340 AM Saturdays at 4:30 p.m.** Visit evangelischeandacht.org for details and archives.

Send listings for internet and radio worship services and other programming to editor@swd.lcms.org or mail to Communications, South Wisconsin District, 8100 W. Capitol Dr., Milwaukee, WI 53222. WJYI 1340 AM can be heard online at joy1340.com.

Hope has a chilly community picnic

Hope, Milwaukee, hosted a chilly but fun-filled community picnic on Saturday afternoon, Oct. 10, in their 35th Street church parking lot. Everyone in the neighborhood was invited. Hope members spread the word by distributing 600 flyers door-to-door and at the church's food pantry, as well as by word-of-mouth and on the Cold Springs neighborhood website. More than 100 people responded. Most of the picnickers were people from the neighborhood who walked over. Very few had a previous connection to Hope, except perhaps through the food pantry. About two dozen Hope members

were also there to help with the serving, setup and cleanup.

The food was great and all of it was free for the asking. The women in the serving line stood there for four hours, filling people's plates. St. John, North Prairie, generously donated brats, hamburgers, hot dogs and soda for the picnic. Hope's pastor Rev. Micah Wildauer cooked the meat on his large new charcoal grill, and he was just about able to keep up with the line of hungry people. Later Hope member Bill Vlach took over the grilling and kept on cooking until the last person was served at 4 p.m.

The most memorable part of the Hope community picnic was the weather. The temperature was 42 degrees and snow flurries whirled around. It must have been one of the coldest October 10ths in Milwaukee history. (It was a little warmer near the charcoal grill.) Despite the chill, many of the neighborhood visitors stayed around and chatted for quite a while. That's exactly what the picnic was for, to let visitors get to know Hope members and become comfortable there. A number of picnickers said that they wanted to visit the church's services. Two people from the picnic were at Sunday service the next day and another visited the service on Wednesday night.

Will Hope have a community picnic again next year? It was a great event, but many said, "Next time let's do it earlier in the season!"



Bill Vlach grills brats and burgers for neighborhood visitors at Hope's picnic.

St. Stephen, Horicon, supports orphans through cupcake sale

Members of St. Stephen, Horicon, held their annual cupcake sale Nov. 6-8, 2009. Cupcakes were sold during the school lunch hour Nov. 6 and following services on Nov. 7-8. The proceeds of \$663 will be combined with October school chapel offerings. The congregation and school students will sponsor two Kenyan orphans for the next year through LCMS World Relief and Human Care's 1000 Orphans program.

The program is an opportunity to make a lasting difference for children who might

otherwise end up destitute on the streets. An estimated eight percent of Kenyan adults are living with the HIV virus, and 1.2 million Kenyan children have lost at least one parent to the disease. Without a family, an orphan's future is bleak. Most are forced to drop out of school because they cannot pay the tuition, which is required in Kenya. Many orphans are exploited through child labor. Orphaned girls often suffer sexual ex-

ploitation and become prostitutes.

The church and school will receive information regarding the "adopted children" several times throughout the year.



Anniversary Corner

Birthdays (90, 95, 100 & above)

JANUARY

- 5 Mildred Kloosterboer, 90, Pella, Waupun
- 11 Hazel Redman, 90, Pella, Waupun
- 12 Walter Bickel, 90, St. Paul, Brown Deer
- 18 Berta Deptolla, 90, St. Stephen, Horicon
- 20 Victor Bennett, 95, St. Stephen, Horicon

FEBRUARY

- 4 Evelyn Heise, 90, Grace, Omro
- 5 Lorraine Filter, 95, St. Paul, Brown Deer
- 11 Grace Baumbach, 95, St. Peter-Immanuel, Milwaukee
- 16 Marguerite Pedersen, 90, St. Peter-Immanuel, Milwaukee
- 19 Ida Perschke, 90, St. Stephen, Horicon
- 20 Alva Heup, 95, Covenant, Milwaukee

Anniversaries (50, 55, 60, 65 & above)

JANUARY

- 1 Emmet and Marjorie Welky, 60, St. Peter-Immanuel, Milwaukee
- 8 Frank and Elda Uttech, 66, St. John, West Bend
- 13 Norman and Marilyn Minster, 65, Luther Memorial, Sheboygan
- 29 Donald and Janet Meisenheimer, 55, Pilgrim, West Bend

FEBRUARY

- 19 Edwin and Shirley Wiese, 55, Pella, Waupun
- 27 Ken and Joan Stuehn, 50, Grace, Omro

Send us the names of people who will observe a March or April 2010 birthday (90, 95, 100, or above) or anniversary (50, 55, 60, 65, or above). Deadline is Feb. 1, 2010. E-mail: editor@swd.lcms.org. Mail: South Wisconsin News, 8100 W. Capitol Dr., Milwaukee, WI 53222.

SUBSCRIBE TODAY

Are you getting your copy of the South Wisconsin News? For \$5 per year you can give a gift subscription or have it delivered to your door. Make your check payable to South Wisconsin District and mail to South Wisconsin News, 8100 W. Capitol Dr., Milwaukee, WI 53222.



Name _____

Address _____

City, State, Zip _____





Mission Lamp

Lutheran Women's Missionary League News
Here is what **Lutheran Women in Mission** are doing!

See you there:
District Convention
June 18-19, 2010
Wyndham Hotel
Milwaukee

Mission grant education for 2008-2010:

8. Cistern for Lutheran church, Chiquimula, Guatemala (\$1, 098)

To construct a cistern to provide clean and safe water for the church and parsonage. The Rev. Tiburcio Jiron and his wife, Carmelina, were sent to this poor area. The city water is not dependable.

EXECUTIVE COMMITTEE

President

Jan Dankwardt
920-783-0776
jan.dankwardt@yahoo.com

VP, Servant Resources

Judy Paulson
920-989-1777
judykay1@ix.netcom.com

VP, Gospel Outreach/ Christian Life

Florence Harms
608-323-3420
fharmslwml@trivest.net

VP, Human Care, Grants

Linda Christensen
608-762-5264
ac88@mhctc.net

VP, Communications

Barbara Kurth
262-252-4573
barbtk4@juno.com

Recording Secretary

Linda Ault
608-676-4994
copi1kitty@aol.com

Corres. Secretary

Barbara Strenger
920-467-3644
barogst@att.net

Financial Secretary (Receives all funds)

Janis Mattson
3557 S. 43rd St.
Greenfield, WI 53220
414-546-1998
jmm11098@aol.com

Renewal Committee Chairman

Jean Kruse
262-786-4520
djkruise4@aol.com

Treasurer (Pays all bills)

Debbie Netz
djnetz@charter.net

Senior Counselor

Rev. David Totsky
414-444-4133
tots_brkfld@yahoo.com

Junior Counselor

Rev. Brian Beardsley
920-361-1812(O)
revbr@centurytel.net

From our President

Find strength in Him

NEW BEGINNINGS! We are now a decade into the 21st century. WOW, that happened fast, did it not? Here we are at the beginning of another year. Is this a time of change for you? Is it a time for New Year's Resolutions? Have you had good experiences in the past with resolutions? I cannot say that I have made any permanent changes in my life that have started on January 1.

Yet, we go through changes all our lives. God tells us where to find the strength for the changes. In Romans 12:2, He reminds us, "Do not conform any longer to the pattern of this world, but be transformed by the renewing of your mind."

So how does this renewal of the mind take place? It happens each day as we spend time in God's Word. There He tells us "inwardly we are being renewed day by day."

In Psalm 51, the psalmist reminds us where our strength can be found. These simple words have deep meaning to me, and they are my prayer for you in 2010 and the years ahead.



Jan Dankwardt,
President

"Create in me a clean heart, O God
And renew a right spirit within me.
Do not cast me from your presence,

Or take your Holy Spirit from me.
Restore to me the Joy of your salvation,
And grant me a willing spirit to sustain me."

Keep Close to the Lord This Year,

Jan

Goers to Costa Rica!

Beverly Lueder, Gail Kapellen and Elaine Lueck from St. John Lutheran Church in Plymouth are making plans to participate in the SWD Mission trip to Costa Rica January 15-23, 2010. This will be an English as Second Language Camp in Heredia, Costa Rica.

MOST (Mission Opportunities Short Term) Ministries provides the curriculum for the camp and a MOST team leader provides pre-field training to team members on how to teach the lessons. Lessons are taught using a Christian curriculum that allows small personalized classes. They will be working with Rev. Pedro Adolfo Quintero who serves as a missionary in nearby San Jose, Costa Rica. Please keep this entire team #1003 in your prayers as they share their love of Jesus with these students.

Jan./Feb. Mission Lamp by Jan. 5 to:

Lori Kleinschmidt, Editor
884 Fieldcrest Dr.,
Neenah, WI 54956-1716
(920) 727-8870
mmlklein@sbcglobal.net

The official call for the 33rd biennial SWD- LWML Convention

Mark your calendars! On June 18, 2010 the SWD-LWML will meet in biennial convention at the Wyndham Airport Hotel in Milwaukee, Wisconsin. The voting body consists of elected delegates (or predetermined alternates) from individual societies and voting members of the executive committee. Specifications for selection of delegates are provided in the bylaws. See the logo and other details in this issue and in the next issue of Mission Lamp.

"From the Mountains Come Sounds of Joy." That is the theme for the 33rd biennial convention of our South Wisconsin District – Lutheran Women's Missionary League. We have been serving our Lord by bringing our prayers and mites for Missions to Him for well over 60 years.

This is going to be one JOYFUL and inspiring convention. We are excited to see all of you there. Our Convention Committee has been working diligently to make it a special occasion for everyone. If you do not want to come alone, bring a friend. Come for the day on Friday for our special events, or come on Saturday when we get down to the serious business of making plans for the future of our district.

It is time once again to decide where those mites will be going for the next two years. Please help us decide. That is what a delegate does. In addition to voting on mites, she also gives us her vote for the new officers that will be leading us. What an exciting time it is for all of us.

Is God calling you to His service? Please listen to his still small voice and agree to be a delegate from your society. Being a delegate helps to bring excitement and understanding about the many areas of our outreach back to the societies. It helps to build enthusiasm in our district. Each society is encouraged to send two delegates. We value your service to the LWML in this special way.

We have much more planned besides choosing the mites and officers. There are seminars and mission speakers, servant events and the ingathering and of course, the uplifting and joyful music. We have some special surprises that we brought back from the convention in Portland last summer, and you will not want to miss a chance to meet one of our newest personalities. It will be so much fun to share everything with you. Please join us and help us plan our direction for the next two years.

Joyfully,
Jan

Reminders


Deadline for Convention Manual Reports is Jan. 25th (all committees and officers). BOD meeting reports due to Barb Strenger, Corresponding Secretary (barogst@att.net), by Jan. 27th for the Feb. 27 meeting at Our Redeemer, Delavan.

Have you heard of Veterans of the Cross?

Within our LCMS, we refer to retired church workers and families – the retired pastors, teachers, and spouses – as Veterans of the Cross. Despite having trouble making ends meet, these "veterans" are renowned for making pennies stretch and include the retired church workers who retired prior to 1965 as part of the old retirement plan. Many of the pensions are so small, that even with Social Security, it is impossible for these former church workers to make ends meet. Those with health or other problems often have financial needs greater than the old pension could provide, according to an article on the LCMS website, found under LCMS World Relief and Human Care. I quote from that same article, "Through the Veterans of the Cross Program, LCMS World Relief and Human Care, and Concordia Plan Services, small periodic stipends are provided for impoverished, aged pastors, teachers, and their families. This assistance is provided so these former church workers can pay for necessities like gas, electricity, and food. Today's recipients are not all from the old benefits program, but they all meet the same criteria."

Rev. Matthew Harrison, Executive Director of World Relief and Human Care states, "Hermann Sasse once stated a profound truth. He said that the church that forgets its fathers in the faith becomes spiritually bankrupt." Although many of the Veterans of the Cross are in nursing homes, they are still proclaiming the Word of God in their present mission fields. What part are we to play in being a comfort to those who served their congregations so faithfully? 1 John 3:16-18 says, "This is how we know what love is; Jesus Christ laid down His life for us. And we ought to lay down our lives for our brothers. If anyone has material possessions and sees his brother in need, but has not pity on him, how can the love of God be in him?" I urge you to read the complete article on the LCMS website at www.lcms.org. Type Veterans of the Cross in the search box. View testimonials by retired Lutheran pastors, their spouses, and children explaining what a blessing this Veterans of the Cross Program is. Then, be led by your heart.

Submitted by Barb Kaun SWD-LWML Human Care Chairman



**2008-2010 Theme: Go!
Gather! Glorify!**

"Then I heard the voice of the Lord saying, "Whom shall I send? And who will go for us?" And I said, "Here I am, Send me!"
Isaiah 6:8

Mites Update

Received as of October 31, 2009:
 Mites **\$119,234.75**
 Memorials/Celebrations: **3,215.00**
 Selle Fund Interest: **1,544.82**
Total \$123,994.57

Shortage to date:
\$6,005.43

Mission Lamp

Vol. 60, No. 1
**January/February
2010**

Scholarship winners announced for 2009-10



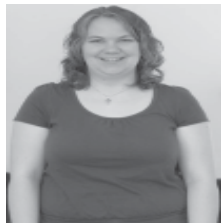
**Katherine Bailey
Oak Creek**

Katherine will be a senior at Concordia University – Nebraska going into Secondary Education, K–12 music education.



**Susan MacGillis
Milwaukee**

Susan will be a junior at Concordia University – Wisconsin going into Secondary Education.



**Darci Bergelin
Elkhart Lake**

Darci will be a junior at Concordia University – Wisconsin going into Secondary Education.

Respectfully submitted by the Scholarship Committee:

Elizabeth Pierog, Chairman,
Christine Kylar, &
Michelle Buehler

Next issue:

Convention registration will be available. One thing to remember is that hotel reservations will be made separately from the registration. Also, there will be pictures and bio-graphies of nominees for District offices. Please prayerfully consider an office if you are nominated to serve the Lord in this way.



Convention preview

WHO: All women from the South Wisconsin District.
WHERE: At the Wyndham Hotel in Milwaukee.
WHAT: 2010 Convention South Wisconsin District LWML
WHEN: Friday & Saturday, June 18-19, 2010
HOW: See the next issue of *Mission Lamp* for registration.
WHY: To Serve the Lord with gladness!
PLUS-MISSION SPEAKERS, CHRISTIAN LIFE PRODUCTS

SERVANT EVENTS — Join other women for fellowship and mission outreach. Choose one of the three projects offered: A) Make "Joy" cards, B) make quilting squares, or C) make LWML national convention promotion tie tacks on Friday afternoon from 4:00 – 4:45.

CHOIR — The Convention Choir will sing two anthems on Saturday. Choir practice will take place at 3 p.m. Friday.

INGATHERING — Please bring only these hygiene supplies: soap, shampoo in tubes or plastic bottles, combs, brushes, toothbrushes and paste, toothpaste, medium size towels and wash cloths. Ingathering items will be donated to The Attic Workshop.

OFFERINGS — Convention offerings will be 1/4 for The Love of Christ Fund (TLC) and the other 3/4 for People of the Book Lutheran Outreach (POBLO).

Convention speakers will share with us!



Michael Tanney



Cynthia Khan

Michael Tanney: Michael Tanney is our keynote speaker. Mike is currently in his second year at Concordia Seminary in St. Louis. Over the past three decades, he has served the Lord as a teacher, DCE, an educational missionary and an evangelistic missionary in his journey to become an ordained pastor. He and his wife, Cathy, have four sons.

Cynthia Khan: Cynthia Khan is a missionary at large with POBLO, People of the Book Lutheran Out-Reach, where she serves as Director of Women's Ministry and oversees the English as a Second Language program. She also acts as Director of Ethnic Ministries at Faith Lutheran Church in Troy, Michigan where she develops programs and Bible studies to cater to social, spiritual and linguistic needs of ethnics. She helps churches with new mission starts and train teachers for ESL. She is married with four children. Cynthia Khan was born and raised in Pakistan. She comes to us as our LCMS World Mission speaker.

Verse: You will go out in joy and be led forth in peace; the mountains and hills will burst into song before you, and all the trees of the field will clap their hands. Isaiah 55:12



Pictured here are Debbie Netz, Treasurer, and LCMS District President, Pastor Wille, as the check for Grant #3-Church Work Student Grant is presented (half-paid \$15,000).



Ever wondered why purple?

(Taken from a recent e-mail from national LWML President Jan Wendorf to LWML board members)

Dear LWML Board of Directors Members,

It seems that several people have wondered why the color purple is associated with the LWML. This is of special interest in the fall as preparations are made to celebrate LWML Sunday. A request was sent to Barbara Huggins who works at Concordia Historical Institute, who sent the following reply based on research into the files and materials that are there:

In Gladys' file of first it states and I quote "It was reported in the Southern Illinois Lutheran Woman's Quarterly Supplement for October of 1948 that their district had adopted the colors of purple and gold. Purple symbolizes royalty and gold symbolizes value and integrity." No scripture reference was given.

I also found a reference on page 77 of the book *Wings* the note that the Executive Board adopted as LWML Colors purple and gold in 1951. At the executive board meeting held on July 24, 1951 at the Commodore Hotel New York, New York the minutes state "motion was made by Mrs. Emil Frank to recommend that the colors Purple and Gold as suggested in the Handbook, be adopted as the official League colors. Action – Adopted.

The date you want for the first use would be the October 1948 but official adoption by the league as a whole July 1951. A handbook was produced at the time and it states the colors.... No reason or biblical reference is given.

Blessings,
Janice (Jan) Wendorf
LWML President

Ask and it will be given to you; seek and you will find;
knock and the door will be opened to you.
Matthew 7:7 NIV



LUTHERAN HOUR MINISTRIES
People Of Christ With A Message Of Hope

www.lll-swd.org



Lutheran Hour Ministries Sunday, February 7, 2010



Lutheran Hour Sunday is the perfect time for congregations to become educated on the advancements of Gospel work. The celebration takes place on Sunday Feb. 7th.

This is a great time to discover the great things the LORD is doing through Lutheran Hour Ministries. This is also a great time for congregations to help share in the presentation of the Gospel through out the world.

In December LHM Sunday materials were sent to Ambassadors and churches that have participated in the past. If your Ambassadors or your congregation did not receive these materials, please call 1-800-944-3450 ext.4195, or e-mail ambassador@lhm.org to be included.

Did your congregation acknowledge and participate in the on line survey conducted in cooperation with the Lutheran Hour Ministries and the Lutheran Women's Mission League?

At the center of the survey were two questions: Does our church body need something more in the area of women's ministry? And, if so, can our two organizations work together to help meet the need?

The survey was sent in

two versions. One was for pastors or church leaders, the other was for women in congregations. More info at 1-800-944-3450, ext.4209, or e mail faith.spelbring@lhm.org.

The Lutheran Hour® radio program is heard on more than 800 stations, on XM Satellite Radio, and on the American Forces Network broadcast to our troops overseas. Speaker of The Lutheran Hour Pastor Ken Klaus proclaims God's forgiveness and love to more than 650,000 people every week. That is about the same number of people who attend every LCMS church on a Sunday morning. But more than half of these listeners are not members of an LCMS church.

Lutheran Hour Ministries even goes beyond radio programming to reach

people for Christ. They offer congregations like yours effective outreach tools such as evangelism workshops, mission trips, daily devotions, and more, so that we can better reach out to our community.

Lutheran Hour Ministries also has international ministry centers in more than 40 countries that specialize in sharing Christ with their particular culture. They proclaim the Gospel, often in the face of extreme poverty, persecution, anti-religious laws, and violence. Even with these challenges, by the power of the Holy Spirit they are able to say, "We will not be silenced!"

Countless individuals still need to hear about the Savior and Lutheran Hour Ministries is committed to reaching these people. But, they need your support! First and foremost, please pray

for Lutheran Hour Ministries, that God would strengthen their efforts to bring Christ to a world in need. Please also consider supporting with some of the resources God has given you.

Regional Events for LLL-SWD for 2011, will have to be planned in the next few months. Consider joining us to help in this planning.

Directors meetings will be held at Pella Lutheran Church, Waupun on Saturday Jan. 24, and April 17 at 9:30 a.m. Join us for the meeting and a "potluck" lunch. For more information call or email David Martin, 262-334-7616 - demartin56@att.net



LLL float is available for a parade near you!

There is a unique parade float in the South Wisconsin District. The float is available on a first-come-first-served basis. The Lutheran Laymen's League float began its history when Norman Hasz designed the first Vacationland LLL parade float.

Dean and Juanita Oetzman, along with several others bought a trailer and built the present day float. Over the years its color and message have changed, but it always shows Jesus' love.

The current float has won several parade awards and is a big hit in every parade. To reserve the float for a parade in your area, call Rev. Jim Link at (608) 565-7252.



Plan now, call and reserve it for YOUR parade!

If anyone has "Global Care Packages" hanging around contact globalcare@lhmint.org or David Martin, demartin56@att.net or call 1-262-334-7616.

LHM's 2010 Lenten Devotions Uplift and Encourage; Available Online

Visit www.lentendevotions.net to print your 2010 Lenten Devotions from Lutheran Hour Ministries.

Two versions of the devotions allow your church or school to minister to believers and seekers alike.

You can also listen online or sign up for podcasts.

COMING SOON on



Dragons, Demons, Horsemen, Plagues, Antichrist, and Armageddon.....

Revelation is one of the most mysterious, confusing, and downright terrifying books in the Bible. Join Lutheran Hour Speaker, Reverend Ken Klaus as he explores the mysteries of Revelation in Explaining All The Scary Stuff In Revelation—the newest Bible study from the Men's NetWork. From the deadly conflict between Rome and the Church to cracking John's secret code with all those numbers, symbols, and monstrous creatures—Pastor Klaus teaches basic

rules to interpret the difficult passages and explore Revelations powerful writing style.

After this study, you'll be able to dive into Revelation and see the hope, joy, and victory God promises to His Church, which is hidden beneath the symbolism and scary stuff.

Download or order your DVD copy on MEN'S Network at www.lhmmen.com!

Facebook is a popular place for the LHM Men's Network in three months it's notice has been seen by 1.4 million people.



Robertson named Lutheran Church Extension Fund president

Dr. David Belasic, chairman of the board of directors of the Lutheran Church Extension Fund (LCEF), announced the selection of Richard C. Robertson of Peachtree City, Georgia, to serve as president of LCEF, effective Jan. 14, 2010. Robertson succeeds Merle Freitag, who announced his retirement in July after more than 11 years as LCEF president.

Robertson brings extensive professional experience in leading large organizations with a high degree of complexity as well as church-related experience to LCEF. Currently the managing partner of H&R Land Development Corp. in Peachtree City, Robertson previously served in numerous senior executive positions in the consumer packaged goods industry, including as president and CEO

of Wise Foods, executive vice president of The Kellogg Company, and vice president and general manager of Keebler Foods. He is a graduate of the University of Massachusetts. His solid business acumen is expected to serve LCEF well.

In addition to his professional background, Robertson has been actively involved in his own congregation, the Florida Georgia District of the LCMS, and LCEF on a national basis.

Robertson and his wife Cindy have been married for 24 years, and have three children: Nathan, Shauna and Bradley.

In making the announcement, Belasic indicated his gratitude to all of the LCEF board members, the search committee, the human resources department of the Synod, and the LCEF staff.

"Rich is a churchman with



Richard Robertson

a great heart for the work of both the LCEF and the LCMS. His personal commitment to the work of the Church and his experience and professional background are an excellent blend that will serve both ministries very well in the near term and for years to come," Belasic said. "We are very grateful to Merle Freitag for his vision, outreach focus, leadership, and organizational development over the past decade, and are thankful that a servant-leader such as Rich has been provided as we look to the future."

Political attitudes

(continued from front page)

tually become even more polarized in a sense. Because what our data demonstrates, and other data, in the LCMS it's the younger generations tend to be more conservative and more Republican. As you move up the generations, it's still conservative, but not as conservative," Walz said.

Denominational identification

Forty percent of LCMS laity and forty-nine percent of ELCA laity have switched denominations. "The denominational identification is dying," said Burkee. "People who don't fit the culture are leaving." Burkee attributed marriage as another reason laity switch denominations.

While the denominational identification may be weakened, it does not mean the denominations will merge. Current trends show that the LCMS and ELCA are against a merger of the two denominations.

In 1970, however, 75 percent of laity was in favor of a merger. Forty-six percent of clergy was in favor of a merger in the same year.

LCMS members and citizenship

The idea for the project was sparked during political debates between Burkee and Walz at churches in 2004, when both professors ran for the Fifth Congressional District seat. Burkee ran on the Republican ticket, while Walz ran on the Democrat

ticket. The professors engaged each other in debates held in churches around southeastern Wisconsin.

At some ELCA churches, Burkee was the target of criticism. At some LCMS churches, Walz was the target of criticism.

"It was kind of hard, because ... [the LCMS] is a very conservative church body and so for some people... somehow this was anathema to the church and I was not a true Christian or a true Lutheran and some were telling me to go to places that are very hot," Walz said.

"The lack of political diversity is really detrimental," said Burkee.

"I'm heartened that the LCMS church is becoming better at teaching citizenship. Not saying to vote for A or B, but it's important to vote," Walz said. Walz stated that the ELCA is better at preparing its membership for active citizenship.

The future of the LCMS

The trends show the divide between LCMS and ELCA political identification is likely to continue.

"At least among pastors, this divide will continue to be magnified. The parishioners: it's a harder nut to crack," Walz said.

The future of the LCMS may be influenced by the church becoming more conservative. Political ideology

(Continued on page 16)

Multi-ethnic symposium features 'Conversations of Hope'



The second multi-ethnic symposium will be held Feb. 1-2, 2010, at Concordia Seminary, St. Louis. This year's topic is "Conversations of Hope." The conference is sponsored by the board for black ministry, the black clergy caucus, national mission affiliates, the Center for Hispanic Studies, national mission executives, and LCMS World Relief and Human Care.

Congregations are encouraged to attend by completing the registration form at csl.edu. For more information contact Concordia Seminary Continuing Education at (314) 505-7486 or e-mail ce@csl.edu.



This 4 x 8 foot stained glass image of Jesus is located in the lobby of Lutheran Haven's nursing home.

Discover



Lutheran Haven Retirement Center

in Oviedo, Florida
a suburb of Orlando

Where your next door neighbor is a fellow Lutheran. And you may find you are connected in some way...LWML, Lutheran pastor, former teacher, etc.



Independent Living Cottages
Assisted Living Facility
Skilled Nursing Facility

A ministry of the SELC District of the Lutheran Church Missouri Synod, **Lutheran Haven** has been a provider of retirement services for 60 years.

For more information, please call or write:
Mrs. P.J. Summersgill • Lutheran Haven • 2041 West State Road 426 • Oviedo, FL 32765
Visit us on the web at www.LutheranHaven.org
(407) 365-2224 Toll Free (800) 272-5676

CONCORDIA UNIVERSITY

W I S C O N S I N

Empty Bowls Event at Concordia University Wisconsin Fights Hunger in the Milwaukee Area

Students and faculty at Concordia University Wisconsin (CUW), along with local artists teamed up to fight local hunger in November on Concordia's Mequon campus, as an event known as Empty Bowls took place.

For a \$5 donation, anyone could come and pick out a handmade ceramic bowl donated by student artists, along with meat

and veggie chili and breads graciously provided by Sodexo, CUW's food caterer.

This was the second annual event with 100% of the proceeds going to fight hunger in the Milwaukee area. The co-curricular Art Guild group on Concordia's campus is sponsoring the event and the goal is to hold a similar event in the spring.

"This is a phenomenal way for artists to use their creativity to serve others," said Sarah Schempf, CUW senior and president of the Art Guild.

For more information on this event you can contact Professor Jeff Shawhan in the CUW Art Department at 262-243-4552 or jeff.shawhan@cuw.edu.



Students and faculty at Concordia University Wisconsin gathered at the Falcon's Nest to feed themselves and others, taking part in the second annual Empty Bowls event on campus. For a \$5 donation, those who participated picked out a handmade ceramic bowl donated by student and local artists and filled it with chili provided by Concordia's food vendor. The event raised \$600 which went to the Hunger Task Force to fight hunger in the Milwaukee area. There was such a demand for bowls that nearly 70 IOU's were handed out.



Concordia Invitational Basketball Tournament offers youth group deal

Please accept our invitation to attend the Concordia Invitational Basketball Tournament (CIT) on Friday evening, January 29, 2010. The Falcon women play at 5:30 and the men's team is in action at 7:30 pm.

Concordia will pay the admission fee and provide a Falcon CIT T-shirt for every student that attends as part of your group. What we need from you by January 15th is a list of all of the students that have signed up for this event and your chaperones.

Our CUW staff will include a tour of the cafeteria, dorms, and other campus highlights. The tours will start at 4:30 sharp so that you have a chance to see our campus and get primed to cheer the Falcons onto victory against CU-Chicago.

At least 2,000 fans are expected for each game but we have reserved a special cheering section for you close to the Brewer mascots and with Milwaukee Buck player(s). All kinds of food options are available.

We look forward to hearing from your building principal or designee as soon as you have completed the list of students who have made the commitment to attend. We would like a 10:1 ratio of student to chaperones and will also provide tickets to those adults who have volunteered to supervise your group.

Please email your list of attendees to Rick.Riehl@cuw.edu by January 15th. Come and celebrate hoops with us!

Whispering Pines Retreat Offers a Great Escape

Just two and a half hours north of Concordia University Wisconsin's campus is Whispering Pines Retreat Center, located on beautiful Shawano Lake. Originally a ten-acre plantation built in the 1930's by Gustav Strandt and his wife Dorothea, in 1972 Dr. Norbert Dettman handed down the estate to Concordia College in his will. It has been utilized for over 35 years by several CUW groups, including Campus Ministry and Kammerchor. The retreat is also available to other groups not affiliated with our campus such as youth groups, church boards, school groups, professional groups, and church family camps.

Some of the outdoor recreational activities available include volleyball, boating, swimming,

fishing, hiking trails, picnic tables, campfires, cross-country skiing, broomball, and ice skating. Boats are not provided by the retreat, so they must be either personally brought or rented from local marinas. Boating and swimming are both done at your own risk. Ping-pong and foosball can be enjoyed all year long inside the lodges.

In addition to the recreation available, one of the most appealing aspects of the retreat is the calming peace of nature. The lake provides gentle waves and is home to many wildlife including ducks, geese, otters, and beavers. Other wildlife seen on the property includes eagles, osprey, kingfisher, fox, and deer.

Between the three buildings of the Retreat, there are accommodations for 58 people. Showers and bathrooms are located in

each of the buildings. While there are either beds or bunks, sleeping bags or linens and blankets should be provided by campers. There is also a main dining hall and kitchen, but furnished kitchens are supplied in each building for group use. The minimum rate per building per night is \$240 for the Dettman Lodge, \$120 for the Dining Hall, and \$240 for the Strandt Lodge. Other rates include \$30 per night per person or \$60 per night per couple, or \$80 per night per family.

There are guidelines that must be followed which are found on Concordia's website at www.cuw.edu/whisperingpines/guidelines.html. Groups may book a stay at the Retreat nine months in advance and there is no minimum stay required.

For more information about Concordia University Wisconsin visit us on the Web at:

www.cuw.edu



Bethesda Lutheran Communities

Dr. John E. Bauer, President and CEO

Website: www.BethesdaLutheranCommunities.org E-mail: PR@mailblc.org

Bethesda Holds 2009 Annual Banquet at Milwaukee Art Museum



Nella Uitvlugt accepted the Christian Service Award for her work with Friendship Ministries.

Bethesda Lutheran Communities hosted its Annual Banquet at the Milwaukee Art Museum on Saturday, Nov. 14, and honored those who have made lasting impressions on the field of developmental disabilities.

Nella Uitvlugt received Bethesda's Christian Service award. Uitvlugt serves as the Executive Vice President of Friendship Ministries, an organization which works to establish one-on-one relationships between people with disabilities and volunteer mentors.

Receiving the Bethesda Voices Public Policy award this year was the Governor's Planning Council of Indiana. The Council's mission is to "promote public policy which leads to the independence, productivity and inclusion of people with disabilities in all aspects of society."

The recipients of Bethesda's inaugural stewardship award were Herb and Genevieve Peters. Due to their incredible kindness to Bethesda over the years, the award has also been named for them.

The Pool of Bethesda award was presented to Steve Eidelman, the past president of American Association on Intellectual and Developmental Disabilities. Prior to that he was executive director of The Arc of the United States, the nation's largest organization concerned with people with developmental disabilities and their families. Currently, Eidelman is a professor at the University of Delaware.

The theme of the event was "Lasting Impressions." All of the awarded individuals have made lasting impressions on the field of developmental disabilities. At the end of the night, Dr. John E. Bauer, revealed a blank canvas and challenged those in attendance. He asked: "What will you do to make your lasting impression?"

Preus is New Exec. VP

Will oversee Bethesda's Mission Advancement Team

Bethesda Lutheran Communities extended a divine call to Dr. Jacob A.O. Preus to serve as Executive Vice President for Mission Advancement and Spiritual Life. Preus accepted and began his new job on Monday, Oct. 5. The Mission Advancement team of Bethesda includes the divisions of Communications, Development and Religious Life and Church Relations.

"I could not be more pleased to have Jack join our staff," says Dr. John E. Bauer, president and CEO of Bethesda. "He has an outstanding background in executive leadership, fundraising success, and theological depth. Moreover, I have found in him a passion for disability ministry, and for Bethesda's ministry in particular."

Preus had served as president of Concordia University in Irvine, Calif. since 1998. He received his undergraduate degree at the University of Missouri and then went on to Concordia Seminary where he earned his Master's of Divinity in Theology, a Master's of Sacred Theology in Contemporary Roman Catholic Theology and his Doctorate in Latin American Liberation Theology. He served as Professor of Theology at the seminary from 1986 until 1993.

In addition to his role as pastor for congregations in Missouri and Southern California, Preus served as a U.S. Navy Reserves Chaplain in Operations Desert Storm and Desert Shield.



Dr. Preus will oversee the communications, development and religious life functions of Bethesda.

"I'm very enthusiastic about joining the Bethesda team," says Preus. "Bethesda is developing an exciting vision for the future and I'm delighted to be part of that vision. I hope to bring the insights and experiences I've acquired in more than 25 years experience in Lutheran higher education to my role as Executive Vice President of Mission Advancement and Church Relations."

SAVE the date

GOLDEN Gala

3rd Annual

Saturday, March 6, 2010
5:30 p.m. until 10:30 p.m.

Italian Community Center
Milwaukee, Wis.

Presented by the
**Milwaukee Associate Board
of Bethesda**

For more info, contact Katey Higgins at katey.higgins@mailblc.org or 800.369.4636, ext. 4432

Winnebago Region schools

By David Jording, regional superintendent

The Winnebago Region of schools is located in the “up north” part of the South Wisconsin District. The region is generally described as the schools and freestanding preschools around Lake Winnebago, extending from Hilbert and Rantoul in the east to West Bloomfield, Oshkosh, Berlin and Omro in the west. The north and south parameters include Neenah-Menasha and Fond du Lac.

Even though winter cold has settling in, the Winnebago Region schools are still basking in the message of Christmas, the life-giving message that the children shared in their Christmas services and pageants: “Oh holy child of Bethlehem, descend to us we pray, cast out our sin and enter in, be born in us today.” Indeed, this is the commonality and glue that binds us together with all the Lutheran schools of the South Wisconsin District.

While the Christmas hymns and melodies of 2009 begin to fade, the Winnebago Region is already planning and taking enrollment for the 2010-11 school year.

Some of the region’s schools will compete in basketball over the winter. All of the region’s teachers will participate in an in-service on the Friday (March 12, 2010) of National Lutheran Schools Week. Many schools of the region participate in spring track and field hosted by Christ Lutheran School in West Bloomfield. The event is unique in that it includes academic and music competition in addition to track and field.

Hope Lutheran Preschool in Fond du Lac, Grace Lutheran Preschool in Omro, and Divine Savior Christian Preschool in North Fond du Lac are the preschools of the Winnebago Region, serving children and families apart from a day school. They are an

integral part of the Winnebago Region as we seek to bring Christ to kids and provide opportunities for faith development in a safe and secure environment.

The principals of the elementary schools of the Winnebago Region have a set schedule of meetings to share common concerns and serve as a forum for mutual support.



Students at Trinity Lutheran School, Rantoul, made sock puppets for teaching tools to be used at Bethania Home in India.



You can see the excitement in the eyes of the preschoolers at Trinity, Menasha, along with teacher Chris Boettcher (left) and aide Carrie Clark (right).

School	City	Founded	Enrollment	Principal/Director
St. John	Berlin	1867	72	Curt Snow
St. Peter	Hilbert	1888	25	Bonnie Teinert
Trinity	Rantoul	1867	53	Debbie Kline
Grace	Omro	1988	22	Brenda Kester
New Hope	Neenah	1991	259	Laurie Prewitt
Trinity	Menasha	1945	60	Mike Stapleton
HopePreschool	Fond du Lac	1982	60	Barbara Jones
Divine Savior Preschool	N. Fond du Lac	1979	13	Linda Chisholm
Trinity	Oshkosh	1856	95	Joe Reini
Christ	West Bloomfield	1874	40	Ila Robbert

Political attitudes

(continued from page 16)

may shape how the church functions and conducts its worship and Bible studies, according to Burkee.

“I can see the parishioners moving slightly closer together politically when it comes to conservatism versus liberalism,” Walz said. He cited sensitivity to the environment as a potential issue that bridges political differences.

Contemporary worship is another hot issue. “We have seen a trend toward more contemporary worship. Some of the research says that might draw people in who aren’t as

conservative,” Walz said.

The Wisconsin Evangelical Lutheran Synod and pastors were invited to participate in the study, but too few responses were received to include them in the final results. Burkee cited a “culture of non-cooperation” as the presumed reason for the lack of WELS responses.

Burkee and Walz received \$10,000 total from two grants in order to conduct the research.

For additional information on the study, visit cuv.edu/departments/lutheransurvey/lcms.html.

Volunteer opportunities— A variety of talents are needed

What types of tasks do volunteers assist with at the District office? Recently, volunteers have:

- Served as hostesses for breakfasts and luncheons;
- Helped with bulk mailings;
- Written congregational news stories;
- Submitted photos of congregational activities;
- Prayed for SWD members and ministries.

One of the newest volunteers plans to use her talent for baking to supply the office with homemade pastries to be served at meetings!

A variety of volunteer gifts and talents are needed to support the Lord’s work. Make a New Year’s resolution to serve as one of our marvelous volunteers. Share your information with us by visiting the “Get involved” page at swd.lcms.org. Fill out a volunteer form, including times you are available and the types of tasks you enjoy doing. You will then be contacted for an assignment. You also may e-mail volunteer@swd.lcms.org, or call Carolyn Blum at (262) 966-7418.

LUTHERAN CHURCH EXTENSION FUND

New Year's Resolution

Support Ministry Through Investment Support



Open an LCEF Individual Retirement Account:

- Roth • Traditional
- Coverdell Education Savings Account

Your LCEF IRA Supports Ministry!

Lutheran Church Extension Fund's (LCEF) unique ministry-through-investment program is committed to providing you a competitive and fair, market-based interest rate on all of your LCEF invested dollars, including IRAs, and providing low-cost loans to ministries supporting the Great Commission.

To learn more about LCEF IRAs, call 1-800-843-5233.



Lutheran Church Extension Fund
 Tim Dittloff—South Wisconsin District
 1-800-793-3678 • www.lcef.org

LCEF is a nonprofit religious organization; therefore, LCEF investments are not FDIC-insured bank deposit accounts. This is not an offer to sell investments, nor a solicitation to buy. The offer is made solely by LCEF's Offering Circular. Investors should carefully read the Offering Circular, which more fully describes associated risks. www.lcef.org/offer